

Arf1

Catalog Number: 26019

Gene Symbol: ARF1

Description: Anti-Arf1 Mouse Monoclonal Antibody

Background: ARF1 (ADP-ribosylation factor 1) is a member of the ARF super-family. ARF genes encode small GTPases that increase the ADP-ribosyltransferase activity of cholera toxin and are critical for vesicular trafficking as activators of phospholipase D. ARF1 protein is localized to the Golgi apparatus and has a central role in intra-Golgi transport.

Immunogen: Recombinant full length protein of Arf1.

Tested Applications: ELISA, WB, IHC, IP

Recommended Dilutions:

ELISA 1:100-1:5000

WB 1:100-1:2000

IHC 1:50-1:100

Concentration: 1 mg/ml

Host: Mouse

Clonality: Monoclonal

Isotype: IgG

Purity: Purified from ascites

Format: Liquid

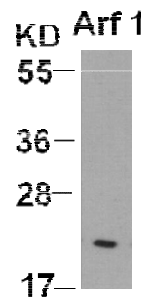
Preservative: No

Constituents: PBS (without Mg^{2+} and Ca^{2+}), pH 7.4, 150 mM NaCl, 50% glycerol

Species Reactivity: Arf1 antibody recognizes Arf1 (possible Arf2 and Arf3) of vertebrates.

Storage Conditions: Store at $-20^{\circ}C$. Avoid freeze / thaw cycles

Western blot:



WB: anti-Arf1 mAb

Western blot analysis of Arf1 proteins.

FOR RESEARCH USE ONLY. NOT FOR DIAGNOSTIC APPLICATIONS